



[I-21/68/2024-W&M Section]  
GOVERNMENT OF INDIA/भारत सरकार  
MINISTRY OF CONSUMER AFFAIRS, FOOD AND PUBLIC DISTRIBUTION  
उपभोक्ता मामले, खाद्य एवं सार्वजनिक वितरण मंत्रालय  
DEPARTMENT OF CONSUMER AFFAIRS/ उपभोक्ता मामले विभाग  
LEGAL METROLOGY DIVISION/ विधिक मापविज्ञान प्रभाग

Krishi Bhawan/कृषि भवन, नई दिल्ली  
Dated/दिनांक:- 18.03.2024

Certificate of Approval of Model/ मॉडल का अनुमोदन प्रमाणपत्र

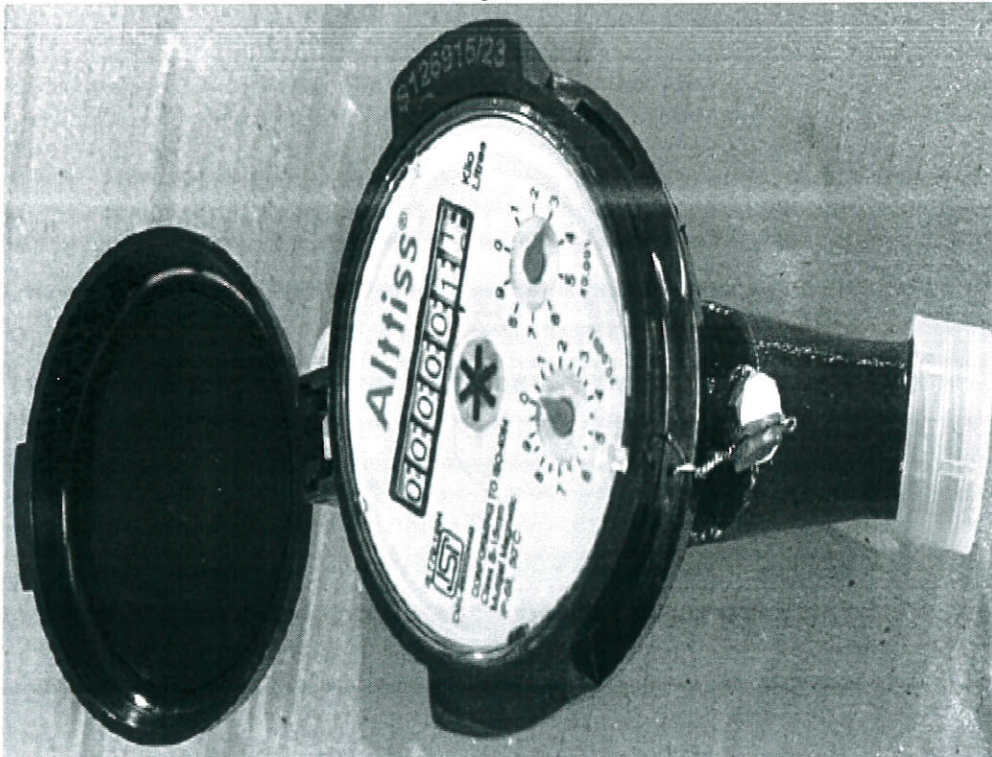
Whereas the Central Government, after considering the report submitted to it by prescribed authority, is satisfied that the model described in the said report (see the figure given below) is in conformity with the provisions of the Legal Metrology Act, 2009 (1 of 2010) and the Legal Metrology (Approval of Models) Rules, 2011 and the said model is likely to maintain its accuracy over periods of sustained use and to render accurate service under varied conditions;

Now, therefore, in exercise of the powers conferred by section 22 of the Legal Metrology Act, 2009 (1 of 2010) read with sub-rule (6) of rule 8 and sub-rule (4) of rule 11 of the Legal Metrology (Approval of Models) Rules, 2011, as per Schedule Eighth of the Legal Metrology (General) Rules, 2011, the Central Government hereby issues the certificate of approval of the model of water meter of accuracy class B (hereinafter referred to as the said model) of series "MWJM" and with brand name "ALTTISS" manufactured by M/s SMC Aqua Solutions Private Limited, Ground Floor, S-13, Industrial Area, Jalandhar – 144001, Punjab and which is assigned the approval mark IND/09/24/110 (the picture of the model is given below as Figure 1);

The said model is water meter (Domestic Type) intended for metering portable cold water with threaded end connections with no. of digits for display 9(99999.9999 m<sup>3</sup>). Its nominal diameter is 15mm and flow rates is given below as:

Nominal Flow Rate (Qn)	1.5 m <sup>3</sup> /h
Minimum Starting Flow Rate (Qmin)	30 l/h
Transitional Flow Rate (Qt)	120 l/h
Maximum Flow Rate (Qmax)	3 m <sup>3</sup> /h

Figure-1



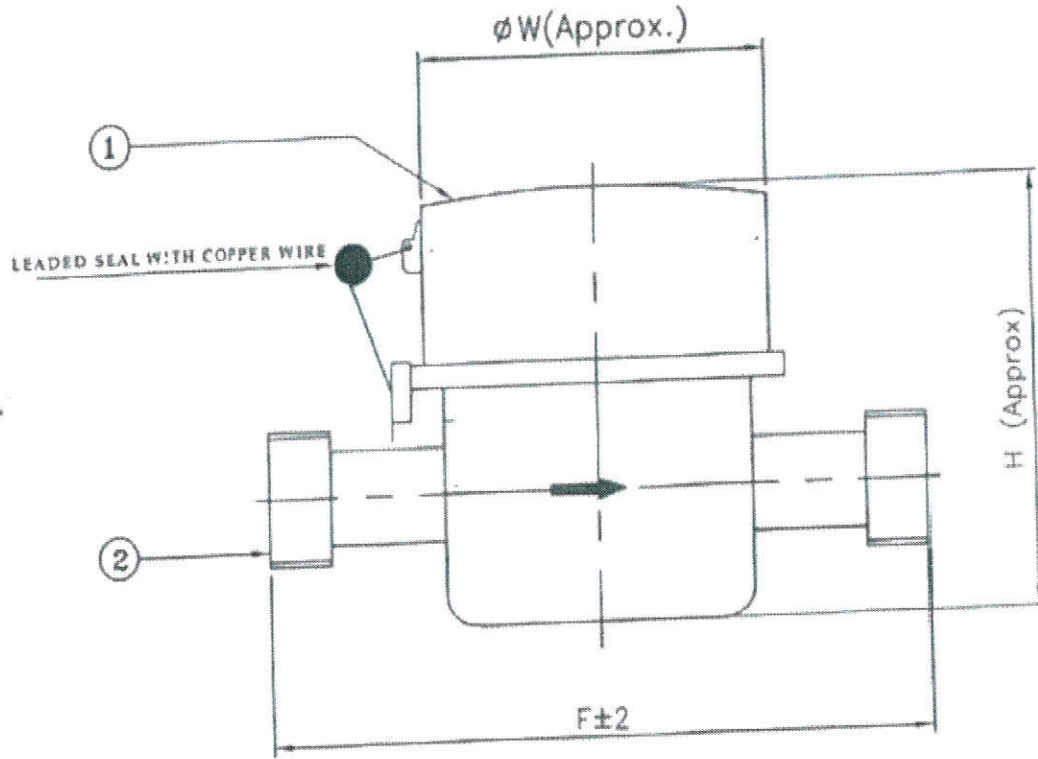


Figure 2

Sealing is done by passing the sealing wire through the holes provided on the body of water meter. A lead seal is put at the end of the wire for stamping purpose. A typical schematic diagram of sealing provision to prevent the fraudulent practices of the model is given above as Figure 2.

Further, in exercise of the power conferred by sub-rule (9) of rule 8 of the Legal Metrology (Approval of Models) Rules, 2011, the Central Government hereby declares that this certificate of approval of the said model shall also cover the water meter of similar make, accuracy and performance of same series with nominal size 15mm dia manufactured by the same manufacturer in accordance with the same principle, design and with the same materials with which, the said approved model has been manufactured.

[F.No. I-21/68/2024-W&M Section]

*Ashutosh Agarwal*

(Ashutosh Agarwal/आशुतोष अग्रवाल)  
Director (Legal Metrology) to Govt. of India/ निदेशक (विधिक माप विज्ञान) भारत सरकार  
Phone/दूरभाष 01123389489  
Email/ई-मेल: [dirwm-ca@nic.in](mailto:dirwm-ca@nic.in)

Online Application No. 17308